

SOLAR ECLIPSE IN "MYANMAR/BURMA" MONDAY 26 JANUARY 2009

POSITION	MAXIMUM ECLIPSE	OBSCURATION	FIRST CONTACT	LAST CONTACT
	H MN S	IN %	H MN S	H MN S
1 Akyab (Sittwe)	16 31 20	9,2	15 43 22	17 15 09
2 Bhamo	16 33 36	6,1	15 53 28	17 10 55
3 Chauk	16 32 12	9,8	15 44 08	17 16 08
4 Dawei	16 29 36	29,1	15 23 48	17 27 45
5 Haka	16 32 37	5,5	15 52 43	17 09 41
6 Heho	16 32 38	12,2	15 42 01	17 18 44
7 Henzada	16 30 58	17,2	15 33 40	17 22 24
8 Hsipaw	16 33 17	9,1	15 47 34	17 15 19
9 Lashio	16 33 27	8,9	15 48 15	17 15 04
10 Loi-kaw	16 32 20	14,8	15 38 40	17 20 55

> Times are shown in LOCAL TIME

> This document is the property of SODAP-SOBOMEX and protected by the international authors laws and the protection of the intellectual property.

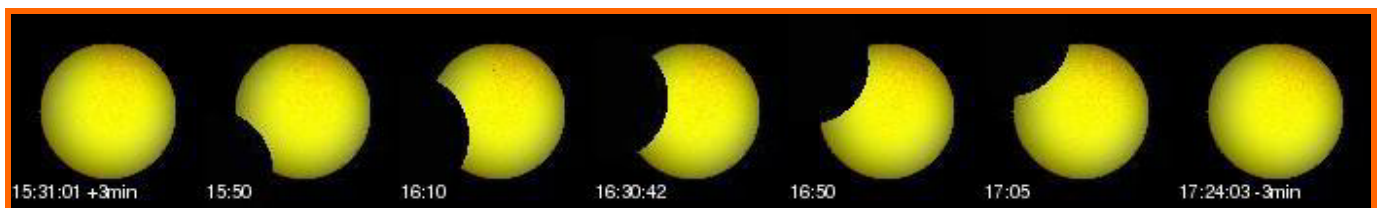
POSITION	MAXIMUM ECLIPSE H MN S	OBSCURATION IN %	FIRST CONTACT H MN S	LAST CONTACT H MN S
11 Magok	16 33 13	7,8	15 49 28	17 13 35
12 Magwe	16 31 57	11,3	15 41 38	17 17 45
13 Mandalay	16 32 51	9,1	15 46 33	17 15 20
14 Mawiamyine	16 30 56	22,5	15 29 52	17 25 24
15 Maymyo	16 32 59	9,3	15 46 29	17 15 39
16 Meiktila	16 32 28	10,9	15 43 16	17 17 22
17 Mergui	16 28 34	33,8	15 19 57	17 28 52
18 Monywa	16 32 41	8,0	15 47 53	17 13 55
19 Myingyan	16 32 32	9,4	15 45 31	17 15 37
20 Myitkyinā	16 33 47	4,5	15 57 36	17 07 41
21 Namtu	16 33 25	8,3	15 49 05	17 14 17
22 NAY PYI TAW	16 32 08	13,2	15 39 52	17 19 34
23 Pa-an	16 31 08	21,5	15 30 53	17 24 58
24 Pakokku	16 32 26	9,3	15 45 23	17 15 31
25 Patheingyi	16 30 17	18,2	15 31 30	17 22 53
26 Pegu	16 31 04	19,2	15 32 19	17 23 42
27 Prome (Pye)	16 31 28	14,4	15 37 17	17 20 25
28 Putao	16 33 55	1,9	16 6 47	16 59 45
29 Pyinmana	16 32 07	13,6	15 39 25	17 19 53
30 RANGOON	16 30 42	19,9	15 31 01	17 24 03
31 Sagaing	16 32 48	9,2	15 46 22	17 15 25
32 Taunggyi	16 32 43	11,9	15 42 35	17 18 25
33 Thaton	16 31 05	21,1	15 31 02	17 24 45
34 Thayetmyo	16 31 41	13,3	15 38 49	17 19 33
35 Toungoo	16 31 50	15,5	15 36 56	17 21 23

➤ Times are shown in LOCAL TIME

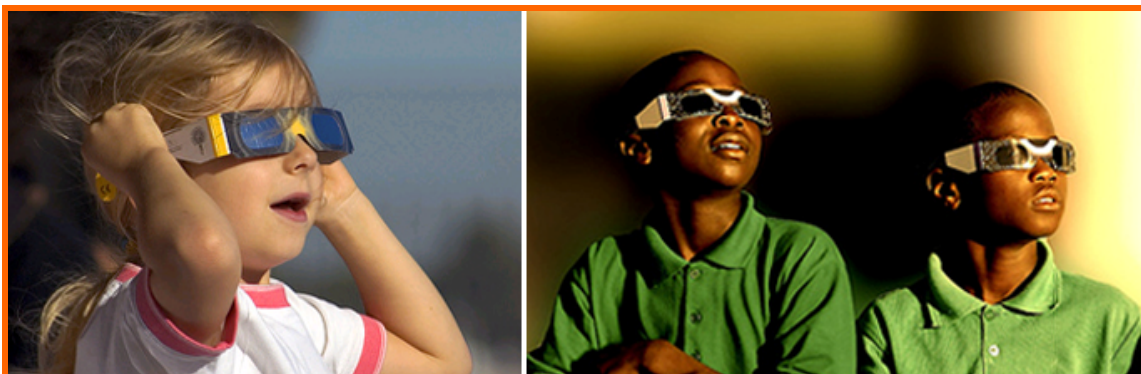
➤ This document is the property of SODAP-SOBOMEX and protected by the international authors laws and the protection of the intellectual property.



WHAT YOU WILL SEE OF THE ECLIPSE IN NAY PYI TAW – 13.2%



WHAT YOU WILL SEE OF THE ECLIPSE IN RANGOON – 19.9%



Enjoy the ECLIPSE

Admire the eclipses, but above all do not forget to wear our ECLIPSE GLASSES!

SODAP – SOBOMEX – 3 rue des Frères Lumière – B.P. 18095 – 67038 STRASBOURG Cedex 2 – FRANCE
 Sàrl au capital de 8.000,00 € - RC Strasbourg 418 703 898 00019 - N°TVA FR21 418 703 898 - Code APE 4649Z
 Tél. +33 390 207 850 - Fax. +33 390 207 855 - E-mail: info@eclipse-glasses.com - Website: <http://www.eclipse-glasses.com>