

SOLAR ECLIPSE IN "INDIA" MONDAY 26 JANUARY 2009

POSITION	MAXIMUM ECLIPSE H MN S	OBSCURATION IN %	FIRST CONTACT H MN S	LAST CONTACT H MN S
1 Agartala	15 31 59	2,3	15 01 36	16 00 41
2 Aizawl	15 32 27	3,4	14 58 06	16 04 40
3 Alleppey	15 11 24	7,5	14 16 45	16 00 22
4 Bangalore	15 16 44	4,1	14 33 11	15 56 37
5 Bellary	15 18 09	1,0	14 50 40	15 44 09
6 Bhubaneswar	15 28 18	2,6	14 54 36	15 59 52
7 Calcutta/Kolkata	15 30 30	1,8	15 01 39	15 57 47
8 Calicut	15 12 55	4,4	14 27 14	15 54 35
9 Cochin	15 11 54	6,7	14 19 22	15 59 11
10 Coimbatore	15 13 56	6,1	14 23 35	15 59 26
11 Cuddalore	15 17 28	8,4	14 23 20	16 06 04
12 Cuttack	15 28 26	2,3	14 56 07	15 58 46
13 Dibrugarh	15 33 27	0,6	15 14 46	15 51 30
14 Dispur	15 32 33	0,4	15 15 59	15 48 36
15 Gauhati	15 32 32	0,3	15 16 40	15 47 56

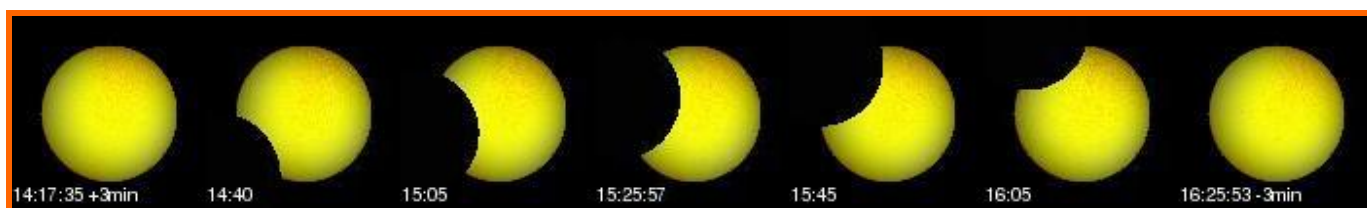
> Times are shown in LOCAL TIME

> This document is the property of SODAP-SOBOMEX and protected by the international authors laws and the protection of the intellectual property.

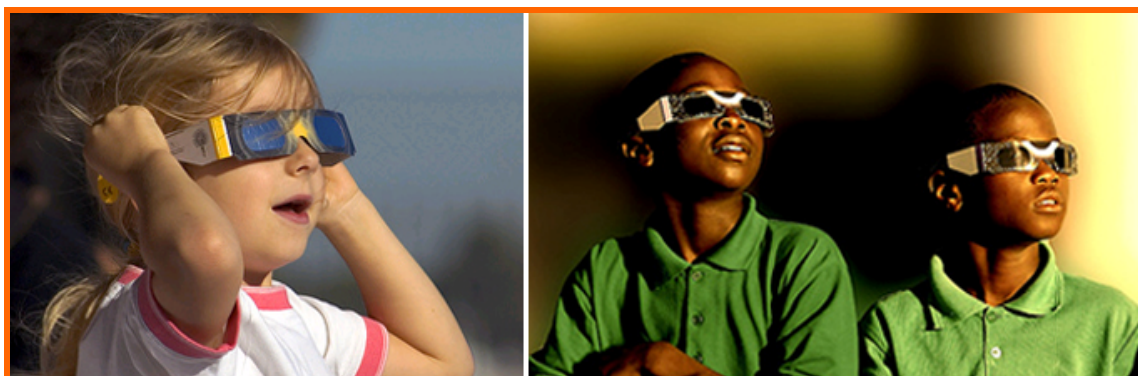
POSITION	MAXIMUM ECLIPSE H MN S	OBSCURATION IN %	FIRST CONTACT			LAST CONTACT		
			H	MN	S	H	MN	S
16 Guntur	15 22 14	2,8	14	45	28	15	56	24
17 Howrah	15 30 29	1,7	15	01	56	15	57	30
18 Hubli	15 16 33	0,1	15	03	04	15	29	40
19 Hyderābād	15 21 24	0,4	15	01	22	15	40	40
20 Imphāl	15 33 00	2,8	15	00	59	16	03	11
21 Itānagar	15 33 08	0,4	15	16	41	15	49	07
22 Jamshedpur	15 29 32	0,4	14	11	35	15	46	52
23 Kākināda	15 24 03	3,6	14	44	49	16	00	21
24 Kavaratti	15 08 19	2,0	14	31	40	15	42	19
25 Kharagpur	15 29 56	1,4	15	03	13	15	55	19
26 Kohima	15 33 10	1,9	15	05	05	15	59	51
27 Madras/Chennai	15 19 17	7,0	14	28	53	16	04	53
28 Madurai	15 13 52	9,2	14	16	45	16	04	49
29 Mahe	15 13 11	3,6	14	30	27	15	52	22
30 Mangalore	15 13 45	1,7	14	40	14	15	45	03
31 Mysore	15 15 04	4,0	14	31	24	15	55	03
32 Nellore	15 20 17	4,7	14	36	09	16	00	41
33 Pondicherry	15 17 44	8,2	14	24	04	16	05	57
34 Port Blair	15 25 57	27,2	14	17	35	16	25	53
35 Rajahmundry	15 23 46	3,2	14	46	05	15	58	44
36 Sagar	15 15 17	0,7	14	50	16	15	39	02
37 Salem	15 15 53	6,6	14	25	00	16	01	49
38 Sambalpur	15 27 48	0,4	15	10	22	15	44	38
39 Shillong	15 32 32	0,8	15	10	49	15	53	24
40 Silchar	15 32 40	2,1	15	03	26	16	00	21
41 Tiruchchirappalli	15 15 27	8,5	14	20	16	16	04	53
42 Trivandrum	15 10 47	9,9	14	11	10	16	03	43
43 Tuticorin	15 12 28	11,1	14	11	27	16	06	30
44 Vellore	15 18 08	5,9	14	29	55	16	01	54
45 Vijayawāda	15 22 37	2,7	14	46	30	15	56	13
46 Vishākhapatnam	15 25 23	3,6	14	46	46	16	01	10
47 Warangal	15 22 47	0,6	15	01	03	15	43	35

➤ Times are shown in LOCAL TIME

➤ This document is the property of SODAP-SOBOMEX and protected by the international authors laws and the protection of the intellectual property.



WHAT YOU WILL SEE OF THE ECLIPSE IN PORT BLAIR – 27.2%



Enjoy the ECLIPSE

Admire the eclipses, but above all do not forget to wear our ECLIPSE GLASSES!

SODAP – SOBOMEX – 3 rue des Frères Lumière – B.P. 18095 – 67038 STRASBOURG Cedex 2 – FRANCE
 Sàrl au capital de 8.000,00 € - RC Strasbourg 418 703 898 00019 - N°TVA FR21 418 703 898 - Code APE 4649Z
 Tél. +33 390 207 850 - Fax. +33 390 207 855 - E-mail: info@eclipse-glasses.com - Website: www.eclipse-glasses.com