



ANNULAR ECLIPSE IN "INDONESIA" MONDAY 26 JANUARY 2009

	POSITION	ANNULAR PHASE MN S	MAXIMUM ECLIPSE H MN S	OBSCURATION IN %	FIRST CONTACT H MN S	LAST CONTACT AT SUNSET H MN S OBS.%
1	Ambon		17 44 08	65,8	16 38 54	17 48 19 64,6
2	Balikpapan		17 48 14	83,6	16 35 41	18 30 30 21,4
3	Banda Aceh		16 51 08	46,8	15 32 47	17 58 31
4 *	Bandar Lampung	5 58	16 41 24	84,8	15 19 47	17 51 26
5	Bandung		16 40 04	82,1	15 19 58	17 49 03
6	Bangil		16 40 28	73,2	15 24 38	17 46 25
7	Banjarmasin		17 45 56	81,5	16 31 38	18 42 31 5,5
8 *	Banyuwangi	3 38	16 40 59	84,8	15 19 52	17 50 40
9	Batam		17 49 10	73,1	16 29 36	18 57 40
10	Baubau		17 43 19	66,5	16 34 48	18 13 02 34,6
11	Bengkulu		16 42 29	82,8	15 19 16	17 53 36
12	Biak		18 13 19	31,9	17 42 01	18 13 19 31,9
13	Binjai		16 50 19	57,3	15 30 29	17 58 52
14	Bitung		17 49 30	82,2	16 42 09	17 53 11 80,0
15	Blitar		16 39 41	72,8	15 23 23	17 45 58
16	Bogor		16 40 20	84,0	15 19 36	17 49 44
17	Bukittinggi		16 46 21	71,0	15 23 58	17 56 46
18	Chilachap		16 39 24	78,3	15 20 24	17 47 37
19	Cirebon		16 40 36	81,2	15 21 19	17 49 00
20 *	Ciwandan	3 38	16 40 49	84,8	15 19 35	17 50 36

- ▶ Times are shown in LOCAL TIME
- * Locality crossed by the central band of the Annular Eclipse
- ▶ This document is the property of SODAP-SOBOMEX and protected by the international authors laws and the protection of the intellectual property.

POSITION	ANNULAR PHASE MN S	MAXIMUM ECLIPSE H MN S	OBSCURATION IN %	FIRST CONTACT			LAST CONTACT AT SUNSET			OBS.%
				H MN S	H MN S	H MN S	H MN S	H MN S		
21	Denpasar		67,3	15 25 43	17 43 53					
22	Dumai		67,4	15 28 48	17 58 10					
23	Fakfak		55,7	17 40 31	18 0 49				55,7	
24	Gorontalo		81,8	16 40 38	18 03 02				64,9	
25	JAKARTA		84,6	15 20 18	17 50 17					
26	Jambi		79,4	15 24 28	17 55 36					
27	Jayapura		11,7	17 41 17	17 56 43				11,7	
28	Kaimana		49,0	17 40 19	18 26 01				49,0	
29	Kediri		73,9	15 23 39	17 46 31					
30	Kendari		70,7	16 36 08	18 11 25				40,8	
31	Kupang		53,6	16 31 12	18 15 40				18,9	
32	Lombok		65,8	16 27 15	18 41 01				0,8	
33	Madiun		74,9	15 23 20	17 46 53					
34	Magelang		77,2	15 22 05	17 47 35					
35	Majene		80,5	16 36 49	18 20 55				33,7	
36	Makassar		71,0	16 33 05	18 25 19				20,2	
37	Malang		72,3	15 24 07	17 45 55					
38	Manado		82,5	16 42 07	17 54 19				79,2	
39	Manokwari		42,9	17 42 04	18 20 54				42,9	
40	Mataram		66,3	16 26 38	18 43 15				0,1	
41	Maumere		58,9	16 31 38	18 18 56				19,4	
42	Medan		57,6	15 30 30	17 58 52					
43	Merauke		22,9	17 38 43	18 06 19				22,9	
44	Mojokerto		74,0	15 24 27	17 46 44					
45	Nameh		84,1	16 39 56	18 27 12				31,4	
46	* Nangaobat	2 14	84,3	15 36 11	17 41 57				10,7	
47	Padang		72,8	15 22 37	17 56 13					
48	Pakalongan		79,3	15 22 23	17 48 31					
49	Palangkaraya		84,3	15 32 30	17 43 40				5,5	
50	Palembang		84,2	15 23 21	17 54 10					
51	Palu		81,5	16 37 46	18 17 56				39,3	
52	Pangkal Pinang		84,0	15 26 13	17 54 48					
53	Parepare		73,3	16 34 14	18 23 13				24,9	
54	Pasuruan		73,0	15 24 42	17 46 20					
55	Pekanbaru		70,5	15 26 35	17 57 25					
56	Pematang Siantar		79,7	15 22 04	17 48 37					
57	Pontianak		83,3	15 32 00	17 55 52					
58	* Poso	5 37	84,4	15 34 33	17 44 12				7,3	
59	Probolinggo		72,3	15 24 48	17 46 03					
60	* Raba	3 41	84,3	15 35 08	17 44 58				7,2	
61	Ruteng		60,9	16 30 21	18 26 02				12,1	
62	Salatiga		77,1	15 22 39	17 47 40					
63	* Samarinda	2 06	84,2	16 36 44	18 28 12				25,6	
64	Semarang		78,0	15 23 07	17 48 07					
65	* Serang	2 13	84,8	15 19 38	17 50 26					
66	Sibolga		62,8	15 26 46	17 58 00					
67	Soasiu		77,3	16 42 03	17 45 31				77,3	
68	Sofifi		77,0	16 42 08	17 44 57				77,0	
69	Sorong		59,4	16 41 41	17 32 18				59,4	
70	Sukabumi		83,1	15 19 09	17 49 17					

➤ Times are shown in LOCAL TIME

* Locality crossed by the central band of the Annular Eclipse

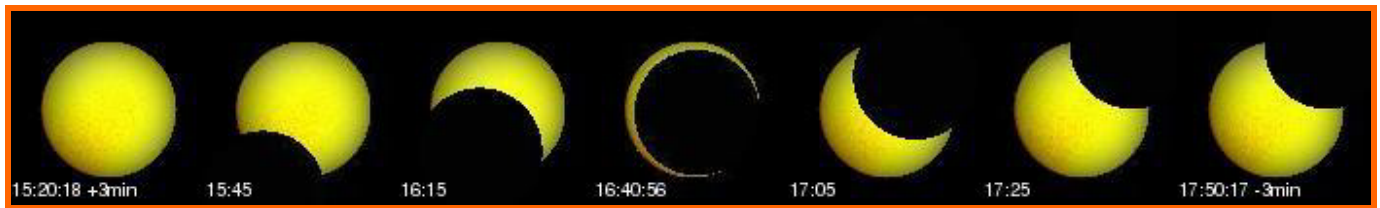
➤ This document is the property of SODAP-SOBOMEX and protected by the international authors laws and the protection of the intellectual property.

POSITION	ANNULAR PHASE MN S	MAXIMUM ECLIPSE H MN S	OBSCURATION IN %	FIRST CONTACT			LAST CONTACT AT SUNSET			OBS.%
				H	MN	S	H	MN	S	
71	Sungaipakning		69,5	15	28	42	17	57	57	
72	Surabaya		74,2	15	25	05	17	46	55	
73	Surakarta		76,1	15	22	42	17	47	16	
74 *	Talok	5 11	84,1	16	39	21	18	19	31	40,7
75	Tangerang		84,6	15	20	05	17	50	15	
76	Tanjung Balai		61,1	15	30	04	17	58	46	
77 *	Tanjung Karang	5 56	84,8	15	19	46	17	51	24	
78	Tanjungenim		84,5	15	21	02	17	53	31	
79	Tarakan		83,8	16	41	22	18	21	06	41,4
80	Tebing Tinggi		59,1	15	30	20	17	58	51	
81	Tegal		80,1	15	21	48	17	48	42	
82	Telanaipura		79,5	15	24	38	17	55	37	
83	Ternate		77,6	16	42	09	17	45	25	77,6
84	Tondano		82,0	16	41	56	17	54	43	78,2
85	Ujung Pandang		70,9	16	33	07	18	25	12	20,4
86	Waingapu		56,6	16	29	08	18	28	12	8,0
87	Yogyakarta		76,1	15	21	52	17	47	03	

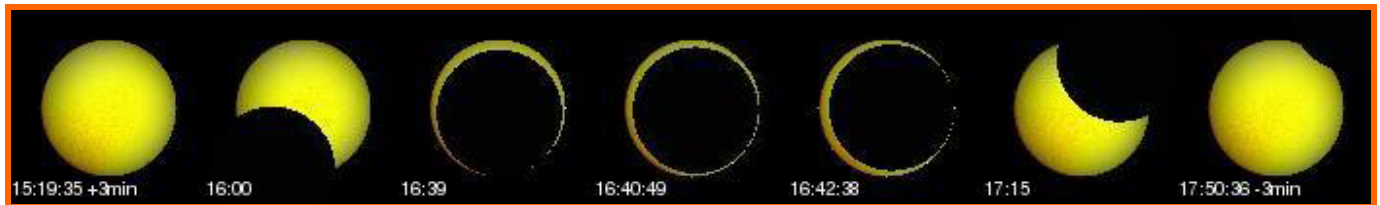
> Times are shown in LOCAL TIME

* Locality crossed by the central band of the Annular Eclipse

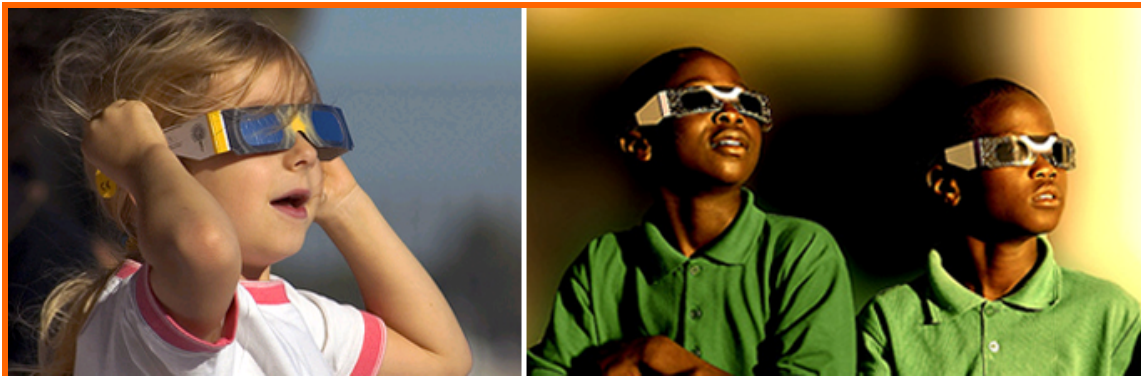
> This document is the property of SODAP-SOBOMEX and protected by the international authors laws and the protection of the intellectual property.



WHAT YOU WILL SEE OF THE ECLIPSE IN JAKARTA – 84.6%



WHAT YOU WILL SEE OF THE ECLIPSE IN CIWANDAN – 84.8%



Enjoy the ECLIPSE

Admire the eclipses, but above all do not forget to wear our ECLIPSE GLASSES!