



SOLAR ECLIPSE IN "LAOS" MONDAY 26 JANUARY 2009

POSITION	MAXIMUM ECLIPSE			OBSCURATION		FIRST CONTACT			LAST CONTACT AT SUNSET		
	H	MN	S	IN %	H	MN	S	H	MN	S	OBS.%
1 Attapu	17	01	07	38,4	15	55	25	17	48	30	6,1
2 Ban Bak	17	01	39	35,5	15	57	22	17	47	12	6,5
3 Ban Houayxay	17	03	05	17,0	16	08	37	17	52	22	
4 Ban Mouang Cha	17	02	51	23,2	16	04	16	17	55	32	
5 Ban Nalé	17	02	37	22,0	16	04	11	17	55	08	
6 Ban Napè	17	02	42	27,0	16	02	27	17	50	25	2,4
7 Lamam	17	01	26	36,5	15	56	34	17	48	07	6,0
8 Louang Namtha	17	03	24	16,5	16	09	53	17	51	58	
9 Louangphrabang	17	03	07	19,8	16	06	53	17	53	54	
10 Muang Khammouan	17	02	19	29,0	16	00	37	17	52	49	1,5
11 Muang Pakxan	17	02	40	25,2	16	02	54	17	56	01	0,1
12 Muang Phôn-Hông	17	02	37	23,4	16	03	30	17	55	42	
13 Muang Xai	17	03	23	17,7	16	08	58	17	52	41	
14 Muang Xon	17	03	23	19,7	16	07	47	17	53	42	
15 Nong Het	17	03	07	22,7	16	05	21	17	53	01	0,5

➤ Times are shown in LOCAL TIME

➤ This document is the property of SODAP-SOBOMEX and protected by the international authors laws and the protection of the intellectual property.

POSITION	MAXIMUM ECLIPSE H MN S	OBSCURATION IN %	FIRST CONTACT			LAST CONTACT AT SUNSET		
			H MN S			H MN S		OBS.%
16 Nuang Khôngxedôn	17 01 30	35,0	15 56 53			17 51 31		3,4
17 Pakxé	17 01 16	36,2	15 56 00			17 52 11		3,1
18 Phôngsali	17 03 40	15,6	16 11 25			17 51 14		
19 Salavan	17 01 34	35,7	15 57 03			17 48 49		5,7
20 Sam Neua	17 03 17	22,3	16 06 09			17 49 31		1,7
21 Savannakhét	17 01 56	31,1	15 58 53			17 54 19		1,2
22 VIENTIANE	17 02 29	24,5	16 02 36			17 56 10		
23 Xaignabouli	17 02 52	20,8	16 05 30			17 54 32		
24 Xam Nua	17 03 25	20,6	16 07 25			17 51 22		0,6
25 Xiangkhoang	17 02 56	22,0	16 05 04			17 55 02		

➤ Times are shown in LOCAL TIME

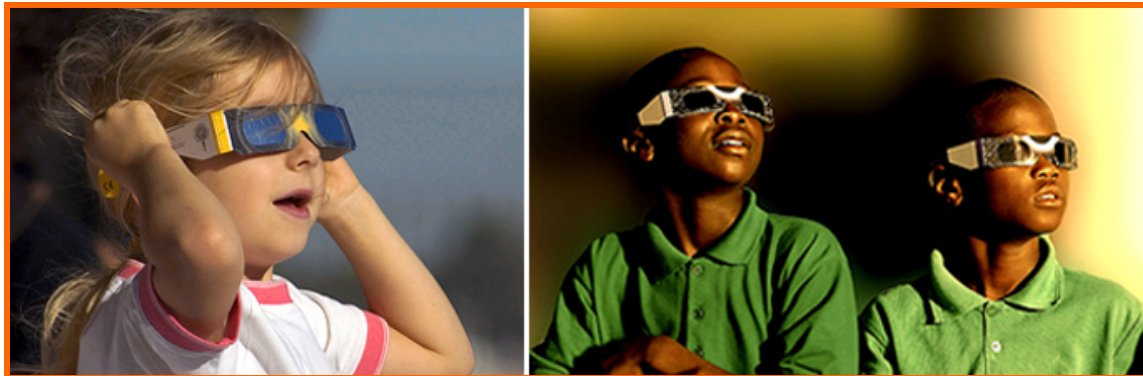
➤ This document is the property of SODAP-SOBOMEX and protected by the international authors laws and the protection of the intellectual property.



WHAT YOU WILL SEE OF THE ECLIPSE IN VIENTIANE – 24.5%



WHAT YOU WILL SEE OF THE ECLIPSE IN ATTAPU – 38.4%



Enjoy the ECLIPSE

Admire the eclipses, but above all do not forget to wear our ECLIPSE GLASSES!