



SOLAR ECLIPSE IN "AFGHANISTAN" WEDNESDAY 22 JULY 2009

POSITION	MAXIMUM ECLIPSE			OBSCURATION IN %	FIRST CONTACT AT SUNRISE		LAST CONTACT		
	H	MN	S		H	MN S	OBS.%	H	MN S
1 Akcha	05	32	50	39,8	05	02 36	12,9	06	19 35
2 Andkhui	05	33	00	38,8	05	06 43	17,0	06	19 09
3 Asadābād	05	30	42	52,4	04	47 40	3,0	06	22 04
4 Baġhlan	05	31	54	45,3	04	54 02	6,0	06	20 50
5 Bagrām	05	30	55	49,9	04	55 01	10,0	06	21 07
6 Bāmian	05	30	59	48,6	05	01 05	17,6	06	20 27
7 Banu	05	31	24	47,8	04	53 25	6,8	06	21 08
8 Chaghcharān	05	31	13	46,5	05	12 05	31,3	06	19 24
9 Chārikar	05	30	58	49,6	04	55 11	10,2	06	21 05
10 Daulat Yar	05	31	10	47,0	05	09 57	28,8	06	19 37
11 Doshi	05	31	29	47,0	04	55 49	9,3	06	20 51
12 Farāh	05	30	36	49,6	05	29 31	49,6	06	18 29
13 Feyzābād	05	32	24	44,6	04	46 18		06	21 46
14 Gardiz	05	30	01	54,3	04	58 19	17,8	06	21 03
15 Ghazni	05	30	03	53,7	05	01 37	22,2	06	20 44
16 Ghurian	05	32	03	42,5	05	27 30	41,6	06	18 09
17 Herāt	05	31	51	43,4	05	24 47	41,2	06	18 22
18 Ishkashim	05	32	04	46,8	04	45 16		06	22 17
19 Jalālābād	05	30	26	53,1	04	51 31	7,5	06	21 43
20 KABUL	05	30	37	51,3	04	56 24	12,9	06	21 06

➤ Times are shown in LOCAL TIME

➤ This document is the property of SODAP-SOBOMEX and protected by the international authors laws and the protection of the intellectual property.

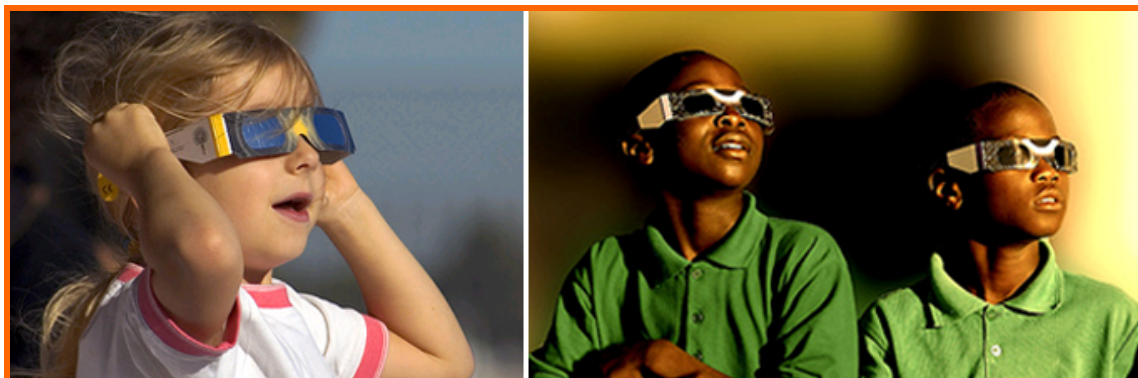
POSITION	MAXIMUM ECLIPSE H MN S	OBSCURATION IN %	FIRST CONTACT AT SUNRISE		LAST CONTACT	
			H MN S	OBS.%	H MN S	H MN S
21 Kandahār	05 29 14	56,9	05 16 30	47,8	06 19 37	
22 Khanabad	05 32 14	44,1	04 51 29	3,0	06 21 00	
23 Khowst	05 29 43	56,2	04 56 04	15,6	06 21 24	
24 Kondoz	05 32 20	43,5	04 52 25	3,6	06 20 52	
25 Lashkar Gāh	05 29 32	55,1	05 22 12	52,0	06 19 10	
26 Mahmud-e Raqi	05 30 57	49,8	04 54 37	9,5	06 21 10	
27 Maimana	05 32 20	41,5	05 10 37	24,5	06 19 07	
28 Mazār-e-Sharif	05 32 30	41,7	04 59 32	10,3	06 20 02	
29 Meydān Shahr	05 30 36	51,0	04 58 05	15,1	06 20 53	
30 Meymaneh	05 32 19	41,5	05 10 34	24,5	06 19 09	
31 Mukur	05 29 42	55,0	05 15 31	44,9	06 20 24	
32 Nurestān	05 30 48	51,3	04 50 28	5,3	06 21 41	
33 Obeh	05 31 39	44,4	05 20 43	39,2	06 18 40	
34 Pol-e 'Alam	05 30 15	52,8	04 58 12	16,5	06 21 00	
35 Pol-e Khomri	05 31 42	46,1	04 54 50	7,5	06 20 51	
36 Qalāt	05 29 19	56,6	05 10 56	39,5	06 20 03	
37 Qal'eh-ye Now	05 32 02	42,5	05 19 28	35,9	06 18 38	
38 Rustak	05 32 29	43,5	04 47 31	0,1	06 21 19	
39 Samangān	05 32 02	44,3	04 56 58	8,8	06 20 31	
40 Sar-e Pol	05 31 41	45,0	05 20 01	38,7	06 19 56	
41 Sharan	05 29 42	55,4	05 01 01	22,8	06 20 52	
42 Sheberghān	05 32 41	40,3	05 04 57	16,1	06 19 29	
43 Shindand	05 31 11	46,7	05 27 19	45,9	06 18 26	
44 Shir Khān	05 32 39	41,9	04 52 13	2,7	06 20 44	
45 Tāloqān	05 32 12	44,4	04 49 44	1,6	06 21 13	
46 Tārin Kowt	05 29 51	53,5	05 13 58	40,9	06 19 41	
47 Towraghondi	05 32 25	40,7	05 22 19	36,4	06 18 20	
48 Zaranj	05 33 25	53,3	05 33 25	53,3	06 18 28	
49 Zebak	05 31 56	47,1	04 45 08		06 22 10	

➤ Times are shown in LOCAL TIME

➤ This document is the property of SODAP-SOBOMEX and protected by the international authors laws and the protection of the intellectual property.



WHAT YOU WILL SEE OF THE ECLIPSE IN KABUL – 51.3%



Enjoy the ECLIPSE

Admire the eclipses, but above all do not forget to wear our ECLIPSE GLASSES!