

## TOTAL ECLIPSE IN "BANGLADESH" WEDNESDAY 22 JULY 2009

POSITION	TOTAL PHASE MN S	MAXIMUM ECLIPSE H MN S	OBSCURATION IN %	FIRST CONTACT H MN S	LAST CONTACT H MN S
1 Barisāl		06 57 27	88,7	05 59 02	08 03 07
2 Bogra		06 57 59	98,1	05 59 36	08 03 24
3 Chalna		06 56 59	89,4	05 58 55	08 02 11
4 Chittagong		06 58 11	85,6	05 59 13	08 04 35
5 Comilla		06 58 16	90,9	05 59 20	08 04 32
6 Cox'S Bazar		06 57 56	81,6	05 59 10	08 04 11
7 <b>DHAKA</b>		<b>06 57 56</b>	<b>92,2</b>	<b>05 59 20</b>	<b>08 03 48</b>
8 * Dinājpur	2 32	06 58 00	100	05 59 53	08 03 00
9 Faridpur		06 57 22	92,8	05 59 08	08 02 42
10 Gaibanda		06 58 17	99,5	05 59 48	08 03 47
11 Jamālpur		06 58 15	97,8	05 59 39	08 03 57
12 Jessore		06 57 03	91,9	05 59 01	08 02 11
13 Khulna		06 57 06	90,1	05 58 58	08 02 22
14 * Lalmanir Hat	2 50	06 58 31	100	06 00 06	08 03 55
15 Maijdi		06 57 58	88,6	05 59 11	08 04 06
16 Mongla		06 56 59	88,6	05 58 57	08 02 14
17 Mymensingh		06 58 25	96,8	05 59 38	08 04 21
18 Naogaon		06 57 44	98,4	05 59 35	08 02 53
19 Nārāyanganj		06 57 56	92,2	05 59 16	08 03 49
20 Nāwābganj		06 57 19	98,2	05 59 28	08 02 06

➤ Times are shown in LOCAL TIME

\* Locality crossed by the central band of the Total Eclipse

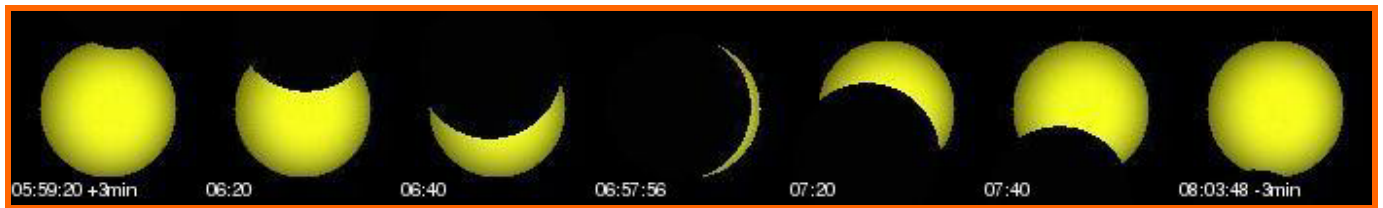
➤ This document is the property of SODAP-SOBOMEX and protected by the international authors laws and the protection of the intellectual property.

	POSITION	TOTAL PHASE MN S	MAXIMUM ECLIPSE H MN S	OBSCURATION IN %	FIRST CONTACT H MN S	LAST CONTACT H MN S
21	<b>Pābna</b>		06 57 29	95,1	05 59 19	08 02 44
22	<b>Rājshāhi</b>		06 57 21	97,2	05 59 22	08 02 19
23 *	<b>Rangpur</b>	2 16	06 58 22	100	05 59 58	08 03 43
24 *	<b>Saidpur</b>	2 54	06 58 15	100	06 00 01	08 03 23
25	<b>Sylhet</b>		06 59 20	95,8	05 59 53	08 06 08
26	<b>Tangail</b>		06 57 57	95,4	05 59 27	08 03 36
27 *	<b>Thakurgaon</b>	3 47	06 58 07	100	06 00 07	08 02 56
28	<b>Tungi</b>		06 58 02	93,4	05 59 24	08 03 56

➤ Times are shown in LOCAL TIME

\* Locality crossed by the central band of the Total Eclipse

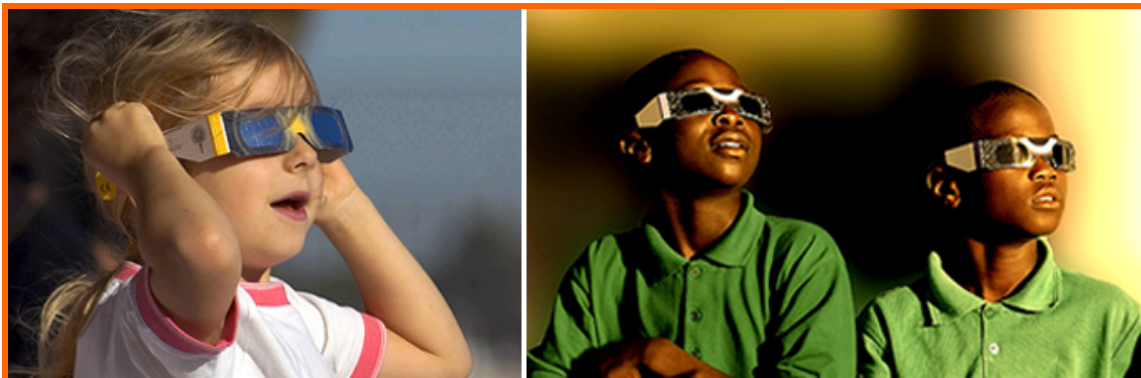
➤ This document is the property of SODAP-SOBOMEX and protected by the international authors laws and the protection of the intellectual property.



WHAT YOU WILL SEE OF THE ECLIPSE IN DHAKA – 92.7%



WHAT YOU WILL SEE OF THE ECLIPSE IN SAIDPUR – 100%



**Enjoy the ECLIPSE**

**Admire the eclipses, but above all do not forget to wear our ECLIPSE GLASSES!**