

## TOTAL ECLIPSE IN "MARSHALL ISLANDS" WEDNESDAY 22 JULY 2009

POSITION	TOTAL PHASE MN S	MAXIMUM ECLIPSE H MN S	OBSCURATION IN %	FIRST CONTACT H MN S	LAST CONTACT H MN S
1 * Ailinglapalap	3 17	15 46 02	100	14 29 13	16 53 38
2 Arno		15 49 18	96,1	14 34 37	16 55 08
3 Bikar		15 40 19	83,5	14 24 59	16 46 57
4 Bikini		15 35 36	96,8	14 16 12	16 45 39
5 Ebeye		15 42 40	100	14 24 58	16 51 05
6 Ebon		15 49 42	99,8	14 33 19	16 56 51
7 * Enewetak	5 45	15 31 31	100	14 09 44	16 43 44
8 Erikub		15 44 58	93,7	14 29 07	16 51 51
9 * Jaluit	4 59	15 48 57	100	14 32 56	16 55 51
10 Knox		15 50 48	98,5	14 36 18	16 56 28
11 Kwajalein		15 42 45	99,6	14 25 03	16 51 10
12 Likiep		15 42 58	93,1	14 26 32	16 50 22
13 MAJURO		15 48 56	96,9	14 33 59	16 55 00
14 Maloelap		15 46 26	92,1	14 31 24	16 52 37
15 Mejit		15 44 04	87,6	14 29 04	16 50 18
16 * Namorik	3 30	15 47 38	100	14 30 36	16 55 21
17 Namu		15 45 47	99,9	14 29 02	16 53 21
18 Rongelap		15 38 02	95,0	14 19 41	16 47 09
19 Rongerik		15 42 23	93,3	14 25 45	16 49 59
20 Taka		15 41 27	88,0	14 25 30	16 48 32

➤ Times are shown in LOCAL TIME

\* Locality crossed by the central band of the Total Eclipse

➤ This document is the property of SODAP-SOBOMEX and protected by the international authors laws and the protection of the intellectual property.

	POSITION	TOTAL PHASE	MAXIMUM ECLIPSE	OBSCURATION	FIRST CONTACT	LAST CONTACT
		MN S	H MN S	IN %	H MN S	H MN S
21	Taongi		15 35 18	78,9	14 19 34	16 42 28
22 *	Ujae	5 17	15 39 58	100	14 20 47	16 49 40
23	Ujelang		15 32 00	97,5	14 09 32	16 44 42
24	Otirik		15 41 29	87,2	14 25 43	16 48 25
25	Wotho		15 38 24	100	14 19 20	16 48 04
26	Wotje		15 44 32	91,8	14 28 53	16 51 17

➤ Times are shown in LOCAL TIME

\* Locality crossed by the central band of the Total Eclipse

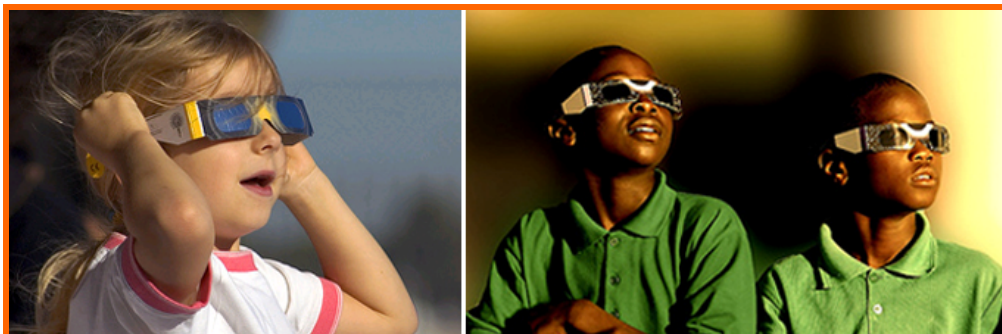
➤ This document is the property of SODAP-SOBOMEX and protected by the international authors laws and the protection of the intellectual property.



WHAT YOU WILL SEE OF THE ECLIPSE IN MAJURO – 96.9%



WHAT YOU WILL SEE OF THE ECLIPSE IN JALUIT – 100%



Enjoy the ECLIPSE

Admire the eclipses, but above all do not forget to wear our ECLIPSE GLASSES!