



SOLAR ECLIPSE IN "LAOS" WEDNESDAY 22 JULY 2009

POSITION	MAXIMUM ECLIPSE	OBSCURATION	FIRST CONTACT	LAST CONTACT
	H MN S	IN %	H MN S	H MN S
1 Attapu	08 13 02	42,0	07 11 53	09 22 29
2 Ban Bak	08 12 44	45,9	07 10 43	09 23 23
3 Ban Houayxay	08 04 56	68,6	07 02 48	09 15 33
4 Ban Mouang Cha	08 07 40	60,6	07 05 08	09 18 58
5 Ban Na Mo	08 06 36	70,5	07 03 28	09 18 21
6 Ban Nalé	08 05 46	61,0	07 04 06	09 16 02
7 Ban Napè	08 10 22	56,7	07 07 06	09 22 23
8 Lamam	08 12 36	44,3	07 11 04	09 22 42
9 Louang Namtha	08 06 06	70,4	07 03 16	09 17 36
10 Louangphrabang	08 06 45	65,4	07 04 01	09 18 06
11 Muang Khammouan	08 09 53	53,1	07 07 28	09 20 54
12 Muang Pakxan	08 08 20	58,0	07 05 52	09 19 34
13 Muang Phôn-Hông	08 06 46	59,4	07 04 50	09 17 22
14 Muang Xai	08 06 44	69,1	07 03 39	09 18 27
15 Muang Xon	08 08 19	66,9	07 04 41	09 20 43

> Times are shown in LOCAL TIME

> This document is the property of SODAP-SOBOMEX and protected by the international authors laws and the protection of the intellectual property.

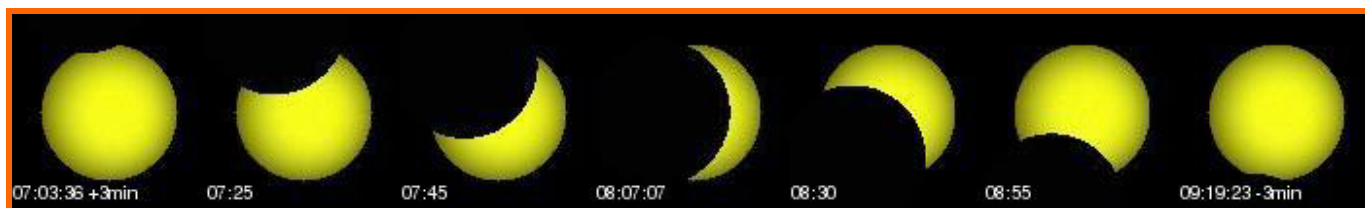
POSITION	MAXIMUM ECLIPSE			OBSCURATION IN %	FIRST CONTACT			LAST CONTACT		
	H	MN	S		H	MN	S	H	MN	S
16 Nong Het	08	09	01	62,3	07	05	34	09	21	15
17 Nuang Khôngxédôn	08	11	12	45,5	07	09	53	09	20	54
18 Pakxé	08	11	10	43,7	07	10	24	09	20	22
19 Phongsali	08	07	07	72,9	07	03	36	09	19	23
20 Salavan	08	12	10	45,6	07	10	23	09	22	22
21 Sam Neua	08	09	16	66,2	07	05	15	09	22	06
22 Savannakhet	08	09	42	50,0	07	07	59	09	19	54
23 VIENTIANE	08	06	55	57,2	07	05	09	09	17	19
24 Xaignabouli	08	06	09	63,3	07	03	57	09	16	54
25 Xam Nua	08	09	13	66,2	07	05	16	09	22	04
26 Xiangkhoang	08	08	10	62,2	07	05	07	09	19	55

➤ Times are shown in LOCAL TIME

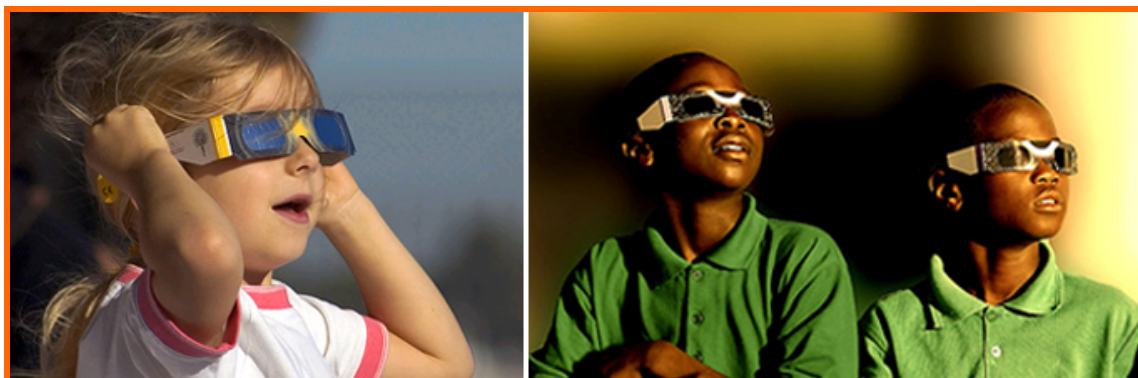
➤ This document is the property of SODAP-SOBOMEX and protected by the international authors laws and the protection of the intellectual property.



WHAT YOU WILL SEE OF THE ECLIPSE IN VIENTIANE – 57.2%



WHAT YOU WILL SEE OF THE ECLIPSE IN PHÔNGSALI – 72.9%



Enjoy the ECLIPSE

Admire the eclipses, but above all do not forget to wear our ECLIPSE GLASSES!