



SOLAR ECLIPSE IN "PAKISTAN" WEDNESDAY 22 JULY 2009

POSITION	MAXIMUM ECLIPSE	OBSCURATION	FIRST CONTACT AT SUNRISE		LAST CONTACT
	H MN S	IN %	H MN S	OBS.%	H MN S
1 Abbottābād	06 00 09	57,3	05 11 03		06 53 11
2 Bahāwalpūr	05 57 03	72,8	05 27 06	28,0	06 51 48
3 Bela	05 56 08	76,9	05 55 12	76,8	06 49 13
4 Dera Ghāzi Khān	05 57 33	69,1	05 30 02	31,1	06 51 26
5 Dera Ismāil Khān	05 58 39	62,7	05 25 30	18,9	06 51 45
6 Faisalābād	05 58 14	67,1	05 17 25	9,0	06 52 50
7 Gilgit	06 01 23	52,6	05 12 47		06 53 53
8 Gujrānwāla	05 58 41	66,0	05 11 49	2,1	06 53 30
9 Gwādar	06 13 12	54,2	06 13 12	54,2	06 48 13
10 Hyderābad	05 55 17	83,1	05 48 30	77,3	06 49 39
11 ISLĀMĀBĀD	05 59 46	59,0	05 12 30	0,9	06 53 06
12 Jacobābād	05 56 46	72,5	05 42 43	57,3	06 50 15
13 Jhang Sadr	05 58 17	66,0	05 21 01	13,7	06 52 23
14 Kanān	05 58 11	66,6	05 21 00	14,1	06 52 24
15 Kalāt	05 57 19	69,2	05 38 47	47,4	06 50 35
16 Karāchi	05 57 32	67,2	05 48 36	61,0	06 49 42
17 Kohāt	05 55 19	83,1	05 54 55	83,1	06 49 08
18 Lahore	05 59 48	57,2	05 19 25	7,0	06 52 11
19 Loralai	05 58 19	68,1	05 12 12	3,1	06 53 31
20 Mardān	05 57 57	65,2	05 37 46	42,1	06 50 36

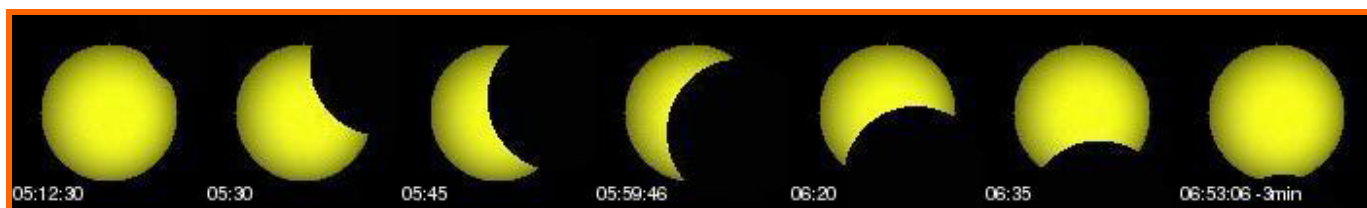
➤ Times are shown in LOCAL TIME

➤ This document is the property of SODAP-SOBOMEX and protected by the international authors laws and the protection of the intellectual property.

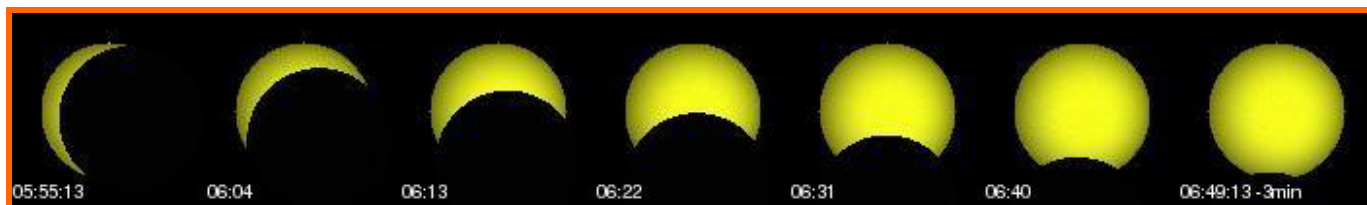
POSITION	MAXIMUM ECLIPSE H MN S	OBSCURATION IN %	FIRST CONTACT AT SUNRISE		LAST CONTACT H MN S
			H MN S	OBS.%	
21 Miānwāli	06 00 12	55,7	05 15 25	2,2	06 52 32
22 Miram Shāh	05 59 03	61,1	05 21 12	11,3	06 52 08
23 Mirpur Khās	05 59 29	57,6	05 26 10	16,7	06 51 27
24 Multān	05 55 15	83,4	05 45 50	73,0	06 49 55
25 Muzaffargarh	05 57 31	69,7	05 26 11	24,5	06 51 51
26 Nok Kundi	05 57 29	69,6	05 28 00	27,7	06 51 40
27 Ormāra	06 04 19	60,1	06 04 19	60,1	06 48 38
28 Peshāwar	06 03 49	72,0	06 03 49	72,0	06 48 39
29 Port Muhammad bin Qasim	06 00 04	56,0	05 17 29	4,3	06 52 18
30 Quetta	05 55 13	83,9	05 55 13	83,9	06 49 13
31 Rahimyār Khān	05 58 10	63,2	05 44 25	51,4	06 49 58
32 Rāwalpindi	05 56 35	74,6	05 34 56	44,6	06 50 58
33 Sargodha	05 59 46	59,0	05 12 36	1,0	06 53 04
34 Shikārpur	05 58 39	64,3	05 18 02	8,5	06 52 39
35 Siālkot	05 56 34	73,8	05 42 36	58,5	06 50 16
36 Sukkur	05 58 56	65,1	05 09 19	0,3	06 53 47
37 Zhob	05 56 24	75,1	05 42 06	58,8	06 50 18

➤ Times are shown in LOCAL TIME

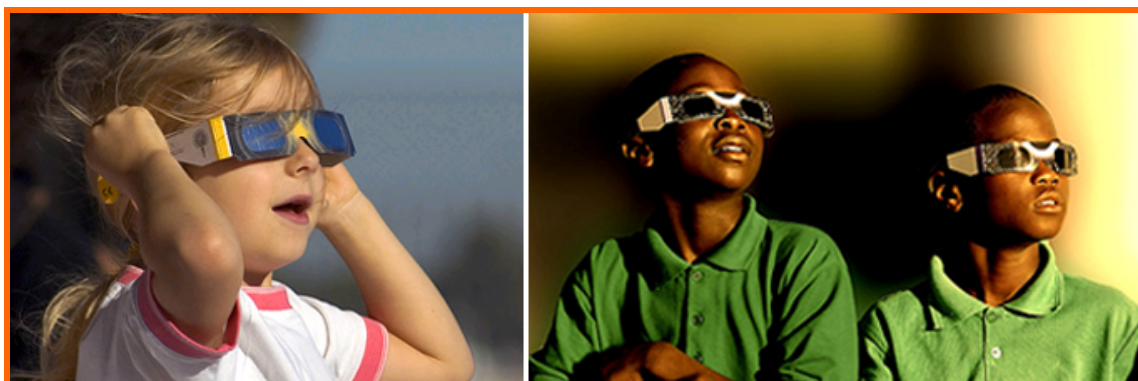
➤ This document is the property of SODAP-SOBOMEX and protected by the international authors laws and the protection of the intellectual property.



WHAT YOU WILL SEE OF THE ECLIPSE IN ISLĀMĀBĀD – 59.0%



WHAT YOU WILL SEE OF THE ECLIPSE IN PORT MUHAMMAD BIN QASIM – 83.9%



Enjoy the ECLIPSE

Admire the eclipses, but above all do not forget to wear our ECLIPSE GLASSES!