



SOLAR ECLIPSE IN "PAPUA NEW GUINEA" WEDNESDAY 22 JULY 2009

POSITION	MAXIMUM ECLIPSE	OBSCURATION	FIRST CONTACT	LAST CONTACT
	H MN S	IN %	H MN S	H MN S
1 Alotau	13 41 37	11,7	12 49 35	14 29 30
2 Arawa	13 45 54	32,3	12 38 22	14 46 27
3 Daru	13 24 39	3,5	12 46 35	14 00 48
4 Goroka	13 25 52	12,1	12 30 08	14 17 32
5 Kavieng	13 32 54	31,7	12 21 53	14 36 42
6 Kerema	13 29 22	8,8	12 39 14	14 16 00
7 Kieta	13 46 02	32,5	12 38 21	14 46 35
8 Kimbe	13 35 34	22,3	12 31 20	14 33 47
9 Kokoda	13 34 45	10,2	12 43 28	14 22 12
10 Kundiawa	13 25 01	11,4	12 29 57	14 16 03
11 Lae	13 30 29	13,4	12 33 57	14 22 38
12 Lorengau	13 24 43	25,4	12 15 43	14 27 25
13 Madang	13 25 41	14,5	12 26 50	14 20 00
14 Mendi	13 22 00	9,1	12 30 11	14 10 21
15 Mount Hagen	13 22 57	10,5	12 29 04	14 13 09
16 PORT MORESBY	13 34 09	8,9	12 46 13	14 18 44
17 Rabaul	13 37 37	30,2	12 28 44	14 39 36
18 Vanimo	13 10 43	12,5	12 12 00	14 05 41
19 Wabag	13 21 13	10,5	12 26 58	14 11 43
20 Wewak	13 18 08	14,4	12 18 06	14 13 49

➤ Times are shown in LOCAL TIME

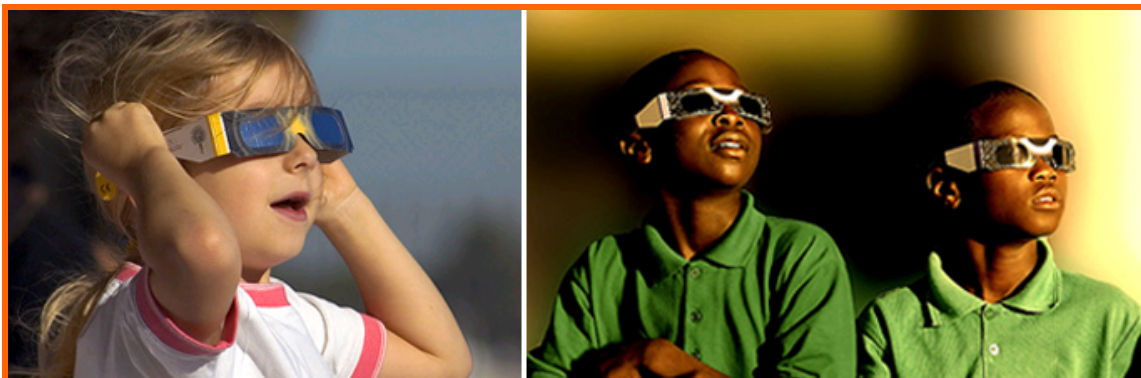
➤ This document is the property of SODAP-SOBOMEX and protected by the international authors laws and the protection of the intellectual property.



WHAT YOU WILL SEE OF THE ECLIPSE IN PORT MORESBY – 8.9%



WHAT YOU WILL SEE OF THE ECLIPSE IN KIETA – 32.5%



Enjoy the ECLIPSE

Admire the eclipses, but above all do not forget to wear our ECLIPSE GLASSES!