

## SOLAR ECLIPSE IN "VIET NAM" WEDNESDAY 22 JULY 2009

POSITION	MAXIMUM ECLIPSE	OBSCURATION	FIRST CONTACT	LAST CONTACT
	H MN S	IN %	H MN S	H MN S
1 Bac Kan	08 12 01	72,4	07 06 11	09 26 48
2 Bac Ninh	08 12 09	68,0	07 06 37	09 26 39
3 Bac Quang	08 10 47	74,5	07 05 22	09 25 05
4 Ban Me Thuot	08 15 08	33,4	07 16 02	09 21 58
5 Bien Hoa	08 13 19	28,0	07 17 17	09 16 27

➤ Times are shown in LOCAL TIME

➤ This document is the property of SODAP-SOBOMEX and protected by the international authors laws and the protection of the intellectual property.

POSITION	MAXIMUM	OBSCURATION	FIRST	LAST
	ECLIPSE		CONTACT	CONTACT
	H MN S	IN %	H MN S	H MN S
6 Cam Ranh	08 17 29	30,1	07 18 54	09 23 34
7 Can Tho	08 11 40	25,5	07 17 32	09 12 32
8 Cao Bang	08 12 44	74,3	07 06 27	09 27 59
9 Chau Phu	08 10 24	28,1	07 15 29	09 12 16
10 Cho Lon	08 13 02	27,4	07 17 25	09 15 40
11 Da Lat	08 15 57	30,6	07 17 44	09 21 40
12 Da Nang	08 15 10	46,0	07 12 03	09 26 52
13 Dien Bien Phu	08 08 10	71,0	07 04 14	09 20 51
14 Dong Hoi	08 12 30	52,7	07 09 00	09 24 43
15 Gia Dinh	08 13 08	27,5	07 17 25	09 15 54
16 Hadong	08 11 41	67,4	07 06 26	09 25 53
17 Ha Giang	08 11 00	75,8	07 05 24	09 25 28
18 Hai Duong	08 12 31	66,9	07 06 57	09 27 04
19 Haiphong	08 12 59	66,3	07 07 16	09 27 42
<b>20 HANOI</b>	<b>08 11 50</b>	<b>67,5</b>	<b>07 06 34</b>	<b>09 26 10</b>
21 Ha Tien	08 09 35	27,4	07 15 19	09 10 40
22 Ha Tinh	08 11 33	56,4	07 07 48	09 24 05
23 Hoa Binh	08 11 03	67,0	07 06 07	09 24 54
24 Ho Chi Minh City	08 13 09	27,4	07 17 29	09 15 51
25 Hong Gai	08 13 35	66,5	07 07 38	09 28 40
26 Hué	08 14 04	47,9	07 10 56	09 25 49
27 Hung Yen	08 12 05	65,8	07 06 49	09 26 18
28 Kontum	08 14 52	39,7	07 13 40	09 24 17
29 Lai Chau	08 08 30	73,8	07 04 12	09 21 33
30 Lang Son	08 13 15	70,5	07 07 01	09 28 30
31 Lao Cai	08 09 35	75,0	07 04 45	09 23 19
32 Loc Ninh	08 12 43	31,2	07 15 30	09 17 20
33 Long Xuyen	08 11 02	26,8	07 16 29	09 12 26
34 Mong Cai	08 15 04	68,5	07 08 14	09 30 59
35 My Hao	08 12 11	67,2	07 06 44	09 26 37
36 My Tho	08 12 36	26,2	07 17 45	09 14 18
37 Nam Dinh	08 12 13	64,8	07 07 00	09 26 23
38 Nha Trang	08 17 17	31,4	07 18 13	09 23 59
39 Ninh Binh	08 11 54	64,2	07 06 54	09 25 50
40 Phan Rang	08 17 07	29,1	07 19 09	09 22 27
41 Phan Thiet	08 15 35	27,3	07 19 03	09 19 14
42 Phuc Yen	08 11 40	68,5	07 06 19	09 25 58
43 Phu Tho	08 11 00	69,5	07 05 52	09 25 04
44 Pleiku	08 14 57	38,1	07 14 14	09 23 45
45 Quang Nam	08 15 10	45,4	07 12 12	09 26 42
46 Quang Ngai	08 16 16	42,2	07 13 44	09 27 12
47 Quang Tri	08 13 25	49,3	07 10 14	09 25 15
48 Quang Yen	08 13 12	66,6	07 07 21	09 28 03
49 Quy Nhon	08 17 03	36,9	07 15 55	09 26 17
50 Rach Gia	08 10 35	25,5	07 16 54	09 10 54
51 Sa Dec	08 11 36	26,4	07 17 02	09 13 00
52 Saigon	08 13 09	27,4	07 17 29	09 15 51
53 Son La	08 09 16	70,2	07 04 52	09 22 29
54 Son Tay	08 11 23	68,1	07 06 12	09 25 30
55 Tay Ninh	08 12 02	29,7	07 15 43	09 15 35

> Times are shown in LOCAL TIME

> This document is the property of SODAP-SOBOMEX and protected by the international authors laws and the protection of the intellectual property.

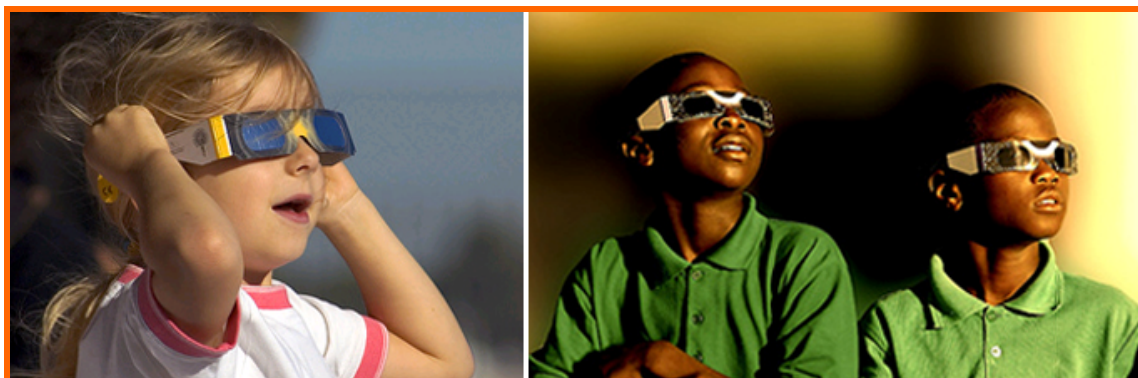
POSITION	MAXIMUM ECLIPSE	OBSCURATION IN %	FIRST CONTACT	LAST CONTACT
	H MN S		H MN S	H MN S
56 Thai Binh	08 12 14	65,2	07 06 58	09 26 27
57 Thai Nguyen	08 12 00	69,6	07 06 24	09 26 34
58 Thanh Hoa	08 11 33	62,5	07 06 55	09 25 06
59 Tuyen Quang	08 11 12	71,2	07 05 50	09 25 30
60 Vinh	08 11 14	58,0	07 07 23	09 23 55
61 Vinh Loi	08 11 46	23,1	07 18 58	09 10 59
62 Vinh Long	08 12 00	26,1	07 17 27	09 13 21
63 Vinh Yen	08 11 31	68,9	07 06 12	09 25 47
64 Vung Tau	08 13 50	25,9	07 18 43	09 15 51
65 Yen Bay	08 10 39	71,1	07 05 32	09 24 39

➤ Times are shown in LOCAL TIME

➤ This document is the property of SODAP-SOBOMEX and protected by the international authors laws and the protection of the intellectual property.



WHAT YOU WILL SEE OF THE ECLIPSE IN HANOI – 67.5%



Enjoy the ECLIPSE

Admire the eclipses, but above all do not forget to wear our ECLIPSE GLASSES!